

# **THE NATIONAL ATLAS OF KOREA**

## **I**



**MINISTRY OF LAND, INFRASTRUCTURE AND TRANSPORT  
NATIONAL GEOGRAPHIC INFORMATION INSTITUTE**





## Foreword to The National Atlas of Korea

Remembrances of our lives can be preserved in various ways: a song, a painting, or a novel can capture a moment or event well. Map making is another good means of preserving our experiences and history. I assume that Kim Jeongho, the author of the treasured national map, Daedong yeojido, devoted his whole life to commemorating the life of ordinary Korean people in a map.

Presented here is the newly revised edition of The National Atlas of Korea. The National Atlas of Korea documents the current state of Korea, her land and her people, along several humanistic-social dimensions. These include territory and territorial water; government and local autonomy; national economy, industry, and spatial planning; Korea in the world; and more. Thus, The National Atlas of Korea is a precious national record.

In the few short years since the first edition of The National Atlas of Korea (2007), our land and lifestyle have experienced rapid transformation. Comprehending and recording such changes precisely and creatively, therefore, is crucial to the historical record. The purpose of such documentation, beyond simple record-keeping, is to strengthen our love for our land and to confirm our value system and Korean identity.

I expect this newly revised edition of The National Atlas of Korea will be the keystone for disseminating information about the physical, social, economic, and cultural changes in our land and people's lives. In this era of globalization and unlimited international competition, this precious national archive will contribute greatly to promoting Korea's territorial sovereignty and national status throughout the world.

My sincere gratitude is extended to everyone involved in this edition of The National Atlas of Korea. Special thanks are due to the scholars at the Korean Geographical Society and officials of the National Geographic Information Institute for selecting, writing, and editing contents; and also to the officials at the central and local governments and public institutions for providing and reviewing the valuable information at their disposal.



Suh, Seoung-hwan

Minister, Ministry of Land, Infrastructure and Transport



## Preface

Our nation's land consists of diverse landscapes. Panoramic views of our land best reflect our people's struggles and triumphs. To this end, the National Geographic Information Institute (NGII) hereby publishes The National Atlas of Korea, which captures the rich heritage of Korea's land and the joys and sorrows of her people.

In 2007, The National Atlas of Korea was published for the first time. Since then, some locales have maintained essentially the same character, while many others have experienced significant changes. In particular, the relocation of the central government to Sejong Special Self-governing City, and of major public institutions to several newly developed special administrative districts around the country, has substantially transformed our land. This edition of The National Atlas of Korea results from our endeavor to understand these changes from various perspectives and document them in an easily accessible fashion.

Beginning this year and extending over the next three years, the National Geographic Information Institute plans to publish one atlas annually (in Korean and English), focusing on different topics. In addition, The National Atlas of Korea for Young Readers and the United Nations' official language edition of The National Atlas of Korea are planned for publication. Thus, this 2014 National Atlas of Korea is the first publication of this three-year venture.

The National Atlas of Korea, 2014 has four major sections. The first chapter, Territory, is a precise cartographic description of Korea's territory and territorial waters from historical viewpoints. The second chapter, Government and Local Autonomy, uses maps to comprehensively cover the national assembly, executive government, judiciary process, and local autonomy structure. The third chapter, The Transformation and Development of the Land, describes the transformation of the national territory and its human settlements, national and regional territorial planning, economy, and industrial activities. Lastly, the fourth chapter, Korea in the World, discusses our diplomacy, international trade and investment, and our international development and cooperation as well as the recent Korean Wave.

A national atlas is an official reference for a nation regarding its territory and the economic, social, and cultural activities of its people. As an official record, The National Atlas of Korea certainly will be the most appropriate educational guide to promote an accurate understanding of our land to future generations. Moreover, I expect that The National Atlas of Korea, with names of localities in the indigenous language, will circulate a truthful understanding of Korea's physical and human environments internationally. To international scholars of Korean studies, this publication certainly will provide abundant and invaluable research material. To further this end, the National Geographic Information Institute pledges to continuously provide national atlases filled with Korea's most updated physical and cultural data.



**Choe, Byong-Nam**

Director General, National Geographic Information Institute



# Editorial Board of the National Atlas of Korea

CHAIRMAN

Choe, Byong-Nam (Director General, National Geographic Information Institute)

VICE CHAIRMAN

Kwon, Sangdae (Director, National Geographic Data Monitoring Department)

GENERAL SECRETARY

Hwang, Chul Sue (Professor, Kyung Hee University)

COOPERATING GOVERNMENT ORGANIZATIONS

Ministry of Strategy and Finance	Ministry of Education
Ministry of Science, ICT and Future Planning	
Ministry of Foreign Affairs	Ministry of Unification
Ministry of Justice	
Ministry of National Defence	Ministry of Security and Public Administration
Ministry of Culture, Sports and Tourism	Ministry of Agriculture, Food and Rural Affairs
Ministry of Trade, Industry and Energy	Ministry of Health and Welfare
Ministry of Environment	Ministry of Employment and Labor
Ministry of Gender Equality and Family	Ministry of Land, Infrastructure and Transport
Ministry of Oceans and Fisheries	Statistics Korea
Cultural Heritage Administration	Rural Development Administration
Multifunctional Administrative City Construction Agency	
Presidential Committee on Regional Development	
Korea Hydrographic and Oceanographic Administration	
National Assembly Secretariat	National Institute of Korean History
Northeast Asian History Foundation	Korea Institute for Curriculum and Evaluation

OFFICE OF THE EDITORIAL BOARD

Beom, Heui Bong (Deputy Director, National Geographic Data Monitoring Department)  
Lee, Jin-Hyuk (Officer in charge, National Geographic Data Monitoring Department)

# Editorial Committee of the National Atlas of Korea

CHAIRMAN	
	Son, Ill (President, The Korean Geographical Society)
EDITOR IN CHIEF	
	Hwang, Chul Sue (Kyung Hee University)
SUBCOMMITTEE ON TERRITORY	
Chairman	Choo, Seongjae (Kyung Hee University)
Members	Chi, Sang-Hyun (Kyung Hee University)
	Oh, Sang-Hak (Jeju Natioinal University)
	Lee, Seung-Ook (Korea Advanced Institute of Science and Technology)
	Lee, Jinhyung (Seoul National University)
SUBCOMMITTEE ON THE TRANSFORMATION AND DEVELOPMENT OF THE LAND	
Chairman	Lee, Wonho (Sungshin Women’s University)
Members	Kim, Taehwan (Korea Research Institute for Human Settlements)
	Joh, Chang-Hyeon (Kyung Hee University)
	Koo, Yangmi (Seoul National University)
SUBCOMMITTEE ON KOREA IN THE WORLD	
Chairman	Lee, Sung-Cheol (Dongguk University)
Members	Chung, Su-Yeul (Sangmyung University)
	Jung, Ahm (Hangaram Institute for History & Culture)
	Park, Sookyung (Sangmyung University)
SUBCOMMITTEE ON CARTOGRAPHY AND MAP	
Chairman	Jeong, Jae-joon (Sungshin Women’s University)
Members	Kim, Young-Hoon (Korea National University of Education)
	Choi, Jinmu (Kyung Hee University)
	Ku, Cha Yong (Sangmyung University)
	Lee, Gunhak (Seoul National University)
	Oh, Chung-Weon (Namseoul University)
	Kim, Minho (Sangmyung University)

# Editorial and Production Section

CHIEF EDITOR

Lee, Jeong-Rock (Chonnam National University)

EDITORS

Park, Jungjae (Seoul National University)  
Lee, Taesoo (Chonnam National University)

ENGLISH VERSION EDITOR

Choi, Jongnam (Western Illinois University)

ENGLISH VERSION SENIOR COPY EDITOR

Mossman, Amy Patrick (Western Illinois University)

ENGLISH VERSION GUEST REVIEWERS

Chu, Greg (University of Wisconsin-La Crosse, Retired)  
Rose, Shea (University of West Georgia)  
Seong, Jeong Chang (University of West Georgia)

CHIEF EDITOR OF MAPS

Jeong, Jae-joon (Sungshin Women’s University)

DIGITAL MAP MAKERS

Lee, Jang Yong	Lee, Han Jin	Kim, Seung Hu
Im, Se Kwang	Lee, Jung Yeon	Baek, Seung Heon

EDITING AND INFOGRAPHIC DESIGN

Kim, Mihyun	Kim, Eunhee	Park, Mi Young	Park, Sang-il
Park, Jung Min	Shin, Jaekyun	An, Eun Ju	Lee, Eui Sun
Jung, Sungho			

MEMBERS OF DATA ANALYSIS SECTION

Kim, Seungho	Roh, Young-hee	Moon, Seonggook	Park, Jeong-Hwan
Yang, Eunjeong	Yang, Homin	Oh, Duri	Won, Seokhwan
Lee, Jung-Hyun	Lee, Jin-Soo	Rhee, Hyosun	Jeon, Hyunju
Chun, Hyesun	Jung, Jinuk	Cho, Shin Young	Chew, Giwan
Ju, Hyeonjin	Ji, Hochul	Jin, Chanwoo	Choi, Moonki
Hong, Seokhyun	Hwang, Taegun		



# Contents

Satellite Image of Korea	2~3
Map of Korea	4~5

## TERRITORY

### Location and National Territory

#### Territory and Territorial Waters

Four Edges of Korea	6
Metropolitan Administrative Area of Korea	7

#### Korea and the World

Distance to the Capital Cities	8-1
Korean Standard Time	8-2
Cities with Similar Latitude	8-3
Cities with more than One Million Population around Seoul	9-1
Gross Domestic Product by Countries	9-2
The World Major Container-Shipping Seaports	9-3

#### Area of the Land

The Size of Korea’s Territory and Countries with the Similar Size	10-1
Korea’s Territory and Average Size of the Territories of the World Countries	10-2
Korea’s Territory and Median Size of the Territories of the World Countries	10-3
Territorial Size of Countries in the World	10-4
Territory Expansion and Land Reclamation	11-1
Change in Total Territorial Area	11-2

#### Accessibility and Potential of Territory

Asian Highway	12-1
Trans-Eurasian Railway	12-2
Airlines Network	13-1
International Air Transportation by Country	13-2
Marine Network	13-3
Liner Shipping Connectivity Index	13-4

#### Dokdo

Geographic Information about Dokdo	15-1
Topographic Map of Dokdo	15-2
Physical Geography of Dokdo	16
Ecosystem of Dokdo	17-1
3D Seabed Images of Dokdo	17-2
Human Environment of Dokdo	18-1
Cadastral Map of Dokdo	18-2
Ulleungdo·Dokdo Sea Route	19-1
Yearly Visits to Dokdo	19-2
Passenger Liners	19-3

### Territorial History of Korea

#### Territory of Ancient Era

Gojoseon	21-1
----------	------

Circa 1 B.C.~1 A.D.	21-2
Around 5th Century	21-3
Around 9th Century	21-4

#### Territory of Medieval and Modern Contemporary Era

Goryeo Dynasty	22-1
Joseon Dynasty	22-2
Korean Empire	22-3
After Independence	22-4
Korean War	23-1
Demilitarized Zone and Civilian Control Zone	23-2

### Territory and Ancient Maps

Paldo chongdo	24-1
Amnokgang byeongyedo	24-2
Dongguk daejeondo	25-1
Haejwa jeondo	25-2
Woodblock of Daedong yeojido	25-3

#### The World Maps

Honil gangni yeokdae gukdo jido	26
Cheonha dojido	27-1
Cheonhado	27-2
Jigu jeonhudo	27-3

#### The National Maps

Joseon bangyeok jido	28-1
Aguk chongdo	28-2
Daedong yeojido	29

#### Local Map of Joseon Dynasty

Doseongdo	30-1
Seobuk pia yanggyeo malli illam jido	30-2
Giseong jeondo	31-1
Cheorongsong jeondo	31-2

#### The East Sea and Dokdo

East Sea on Aguk chongdo	32-1
Joseon on Cheonha dojido	32-2
Ulleungdo on Joseon jido	32-3
Ullengdo and Dokdo on Haejwa jeondo	32-4
Korea on John Senix’s Map of Asia	33-1
Ullengdo and Dokdo of Royaume de Corée by d’Anville	33-2
Shinsen Chosenkoku Zenzu	33-3
East Sea of Nihon Henkai Ryakuzu	33-4

### Research Station and Observing Network

Ocean Research Station of the Gagecho Station and Ocean Research Station of the Jeodo Station	34
Korea Ocean Observing Network	35-1
Permanent GNSS Stations	35-2

### Classification of Regions

Classification of Topographies and Basins	36-1
Traditional Classification of Regions	36-2
Contemporary Classification of Regions I	37-1
Contemporary Classification of Regions II	37-2
Region Classification by Dialects	37-3
Ratio of Each Dialect by Region	37-4

### Administrative Region

Changes in the First-tier Administrative Divisions of Korea	38
---	----

#### Administrative Changes after Independence

1946	39-1
1965	39-2
1970	39-3
1975	39-4
1980	40-1
1985	40-2
1990	40-3
1995	40-4
2000	41-1
2005	41-2
2010	41-3
2013	41-4

#### Expansion of Large Cities

Expansion of Seoul	42
Expansion of Busan	43-1
Expansion of Daegu	43-2
Expansion of Incheon	43-3
Expansion of Gwangju	43-4
Expansion of Daejeon	43-5
Expansion of Ulsan	43-6

#### Special Administrative Region: Sejong

Map of Sejong Metropolitan Autonomous City	44-1
Sejong MAC. at Present	44-2
Population Growth in Sejong	44-3
Governmental Offices Relocation Plan	44-4

#### Special Administrative Region: Jeju

Number of Foreign Tourist in Jeju	45-1
International Air Route of Jeju	45-2
Passengers of Jeju International Airport	45-3
Administration Re-organization of Jeju	45-4

### North Korea

Administrative Re-organization of North Korea	47-1
Overview of North Korea	47-2
Administrative Divisions of North Korea	47-3

#### Population and Cities of North Korea

Population Density of North Korea	48
Urbanization Rate	49-1
Migration	49-2
Inflows in Pyongyang	49-3
Outflows in Pyongyang	49-4
Trend of Population	49-5

#### Economy of North Korea and Inter-Korean

##### Economic Cooperation

Special Economic Zones·Development Zones	50-1
Trend in the Rate of Economic Growth	50-2
Trend in the Growth Rate of Agriculture, Forestry and Fishery	50-3
Trend in the Growth Rate of Mining Industry	50-4
Trend in the Growth Rate of Manufacturing Industry	50-5
Trend in the Growth Rate of Light Industry	50-6



Trend in the Growth Rate of Heavy Industry .....	50-7
Trend in the Growth Rate of Construction Industry .....	50-8
Trend in the Growth Rate of Service Industry .....	50-9
Working Population by Major Industry Group .....	50-10
Working Population by Occupation .....	50-11
History of Inter-Korean Trade and Economic Cooperation .....	51-1
Amount of Inter-Korean Trade by Year .....	51-2
Exchanges of Separated Families by Year .....	51-3
Number of Companies Operating in the Gaeseong Industrial Complex .....	51-4

## GOVERNMENT AND LOCAL AUTONOMY

### National Assembly

Organization Map of National Assembly .....	52
---	----

### National Assembly Election

Turnout of the 19th Election .....	53
Turnout of the 19th Election by Age .....	54-1
Turnout of the 19th Election Member of the National Assembly by Gender and Region .....	54-2
Turnout of Previous Elections .....	55-1

### National Election by Overseas Residents

Range of Law on the Franchise to Overseas Residents .....	55-2
Turnout of the 19th Election by Overseas Residents .....	55-3
Turnout of the 19th Election According to Continent .....	55-4
19th Election by Overseas Residents .....	55-5

### Executive Government

Changes in Government Organization .....	56
--	----

### Civil Servants

Civil Servants of the Central and Local Governments .....	57-1
Number of Civil Servants .....	57-2
Civil Servants for Executive Government .....	57-3
Public Educational Officials .....	58-1
Firefighters .....	58-2
Police Officers .....	58-3
Prosecutors .....	58-4

### Public Institutions in Korea

Distribution of Public Institutions .....	59-1
Executives and Staff Members of Public Institutions .....	59-2

### Judiciary

Organization Map of the Judiciary .....	60
---	----

### Constitution of the Judiciary

Distribution of the Courts .....	61
----------------------------------	----

### Judicial Practice

Number of Legal Cases by High Court .....	62-1
Number of Legal Cases by District Court .....	62-2
Case Received by the Court .....	62-3
Frequency by Case Type .....	62-4
Civil Proceedings .....	62-5
Criminal Proceedings .....	62-6

### Legal Service

Number of Judges of High Court and District Court .....	63-1
---	------

Number of Law Firms and Lawyers by Si · Do .....	63-2
The Entrance Quota of Law School by Si · Do .....	63-3

### Local Autonomy and Decentralization

Administrative District System in Korea .....	64-1
Administrative District System .....	64-2

### Local Autonomy and Election

Election Results of Metropolitan Area Autonomous Bodies .....	65-1
Election Results of Primary Autonomous Bodies .....	65-2
Election Expenses of Candidates by Metropolitan Area Autonomous Bodies .....	65-3
Party Affiliation of Elected Persons in Primary Autonomous Council .....	65-4

### Local Finance

Financial Independence .....	66-1
Local Tax Payment .....	66-2
Changes of Financial Self-reliance and Financial Independence in Local Governments .....	66-3
Changes of Financial Self-reliance .....	66-4

### Decentralization of Power

Si-Gun-Gu Consolidation Target Areas and Their Characteristics .....	67-1
Decentralization of Power Public Survey .....	67-2
Local Handover of Central Government Authorities .....	67-3

## THE TRANSFORMATION AND DEVELOPMENT OF THE LAND

### The Transformation of the Land

The Growth of Seoul .....	68-1
The Urbanization Rates in the World .....	68-2
The Development of Transportation Infrastructures .....	68-3

### The Transformation of the Land Space

Major Land Development Projects .....	69-1
Major Land Development Projects Timetable .....	69-2

### The Development of Transportation and Communication

Major Transportation Infrastructure .....	70-1
Number of Registered Vehicle per 1,000 Persons .....	70-2
Share of Freight by Transportation System .....	70-3
Share of Passenger by Transportation System .....	70-4
Major Transport System Development .....	70-5
Major Railway .....	70-6
Airport Traffic .....	71-1
Seoul Metropolitan Railroad Map .....	71-2
Share of Transportation by Transit System .....	71-3
The Utilization Rate of the Internet .....	71-4
The Growth of Smartphone Users .....	71-5
The Possession Rate of Computers and the Number of Wi-Fi AP .....	71-6

### Urbanization and Living Space

Urbanization in Korea .....	72-1
The Spatial Pattern of Cities by Population Size .....	72-2
Urban Population and Urbanization Rate .....	72-3
Population Growth of Major Cities .....	72-4
The Growth of Commuters in the Capital Region .....	73
Daytime Population Index .....	74

Housing Type and the Change of Apartment Share .....	75-1
The Development of Residential Infrastructure .....	75-2

### Spatial Planning

Changing Economic and Social Conditions and the Land in Korea .....	76
---	----

### National Territorial Planning

4th Comprehensive National Territorial Planning .....	77
1st Comprehensive National Territorial Planning .....	78-1
2nd Comprehensive National Territorial Planning .....	78-2
3rd Comprehensive National Territorial Planning .....	78-3
National Railroad Network Plan .....	79-1
National Principal Road Network Plan .....	79-2
Double-tracking and Electrification of Railroad .....	79-3
National Road Status .....	79-4
Regions Accessible to Expressway IC Less than 30 Minutes .....	79-5
1st Seoul Metropolitan Area Readjustment Plan .....	80-1
2nd Seoul Metropolitan Area Readjustment Plan .....	80-2
3rd Seoul Metropolitan Area Readjustment Plan .....	80-3
Seoul Metropolitan Spatial Structure (1970s) .....	80-4
Seoul Metropolitan Spatial Structure (1980s) .....	80-5
Seoul Metropolitan Spatial Structure (2000s) .....	80-6
Current and Planned Principal Road Network in the Capital Region .....	80-7
Current Status of Innovative City .....	81-1
Current Status of Enterprise City .....	81-2
Sejong Urban Development Plan by Living Zone .....	81-3

### Regional Planning

Designation Status of Growth Promotion District .....	82-1
Designation Status of 10 Wide-area Development Zone .....	82-2
Annual Average Population Change and Backward Region .....	82-3
Aging Index and Backward Region .....	82-4

### Urban Planing

Wide-area Urban Planning Rights and Capital City Plan .....	83-1
Urban Revitalization Leading Regions .....	83-2
New Town Distribution .....	84-1
Comparison of 1st-period and 2nd-period New Town .....	84-2
Land Regulation in Gyeonggi-do .....	85

### Regional Development

Per Capita GRDP .....	86-1
Headquarters of Major Corporations .....	86-2
Regional Problems Recognition by OECD Central Governments .....	86-3

### Regional Development and Policy Framework

Regional Development Pattern in Korea: Population Aspect .....	87-1
Shifting Regional Policy Paradigm in OECD .....	87-2
Special Account for Regional Development and Financing Situation .....	87-3

### Background of Regional Development Policy

Economic Growth Dynamics .....	88-1
Foreign Tourist of Major Asian Countries .....	88-2
Changing Gini Index in Korea .....	88-3
The Capital and Local Region Disparity of Economic Capability .....	88-4
The Capital and Local Region Disparity of the Quality of Life ..	88-5
Depopulating Regions .....	88-6
Regions with Declining Business .....	88-7

Changing Regional Development Policies

Regional Development Policy of the Roh Moo-hyun	
Government	89-1
Regional Development Policy of the Lee Myung-bak	
Government	89-2

Outline of Regional Development Policy during the Park Geun-hye Government

Concept of the HOPE Area	90-1
Design of the HOPE Area	90-2

Regional Development Outcomes: Industrial Production and Infrastructure

The Transition of Regional Industrial Promotion Policies	91-1
Manufacturing Value-added and Sectoral Composition	91-2
Industrial Production Composition	92-1
Infrastructure Investment	92-2
Energy Supply	92-3
Changing Industrial Structure	92-4
Annual Average Change of Infrastructure Investment	92-5
Major New Renewable Energy Sources in 2035	92-6
Change of Industrial Complex Distribution	93-1
Change of Agricultural Industrial Complex Distribution	93-2
New Industrial Production Bases	93-3
Designation of Industrial Complexes	93-4
Contribution of Industrial Complexes to Regional Economy	93-5

Regional Development Outcomes: Human Capital, Research and Development

Structure of Economically Active Population	94-1
Wage Level by Industry	94-2
Occupational Structure	94-3
Occupational Distribution	94-4
Regional Wage Disparity by Industry: Coefficient of Variation	94-5
Average Monthly Wage by Industry	94-6
Changing R&D Investment Rate and Intensity Rate	95-1
R&D Manpower	95-2
R&D Organization Growth and Patent	95-3
R&D Organizations by Si·Do	95-4
R&D Manpower by Si·Do	95-5

Economy and Industry

GDP and the Real Growth Rate of Manufacturing	96-1
The Share of Value Added by Industry	96-2

Economic Growth

Gross Regional Domestic Product	97-1
The Growth of Import and Export	97-2
The Growth of GDP and per Capita GNI	97-3

Industrial Structure and Space

The Growth of Gross Regional Value Added by Industry	98-1
The Change of Industrial Structure	98-2
The Change of Manufacturing Industry Structure	98-3
Light Industries	99-1
Heavy and Chemical Industries	99-2
High-tech Industries	99-3
Knowledge Intensive Services	99-4

Corporations and Innovation

The Distribution of Firms by Business and Scale	100-1
R&D Investment	100-2
The Share of R&D Amount by Investor	100-3

The R&D Investment Rate in the World	100-4
The Share of Top 100 Firms	100-5

Resources and Energy

Agricultural Production	101-1
Mineral Resources	101-2
Final Energy Consumption by Source	101-3
Electricity Generation by Source	101-4
Energy Consumption in Transportation	101-5

The Transformation of Economic Activities

The Share of Employees by Industry and the Employment Rate	102-1
The Change of Consumer Price Index	102-2
Foreign Exchange Rate and Reserves	102-3
The Change of Interest Rates	102-4
The Share of Employees of 15~29 Years Old	103-1
The Share of Employees of 30~49 Years Old	103-2
The Share of Employees of over 50 Years Old	103-3
Unemployment Rate	103-4
The Change of Employment Rate by Gender	103-5
The Change of Unemployment Rate by Gender	103-6
The Change of Employment Rate by Age	103-7
The Change of Unemployment Rate by Age	103-8

Quality of Life

Quality of Life Indices

Happiness Index	105-1
National Statistics of Quality of Life by Sector	105-2
Human Development Index	105-3
Welfare Budget Spending of GDP by Sector	105-4
Level of the Quality of Life by Country	105-5

Public Participation

Voter Turnout in the 18th Presidential Election	106-1
Voter Turnout in the 19th General Election	106-2
Voter Turnout in the 6th Local Election	106-3
Social Support Network	106-4
Social Welfare and Culture Facilities	106-5
Consultation on Rule-making	106-6
Quality of Support Network	106-7
Voter Turnout	106-8

Education

University Entrance Quota by Si·Do	107-1
Number of Students of Primary, Middle and High Schools by Si·Do	107-2
Expected Level of Education by Si·Do	107-3
Percentage of People Who Completed High School or More by Si·Do	107-4
Students' Skills	107-5
Percentage of Adults Who Completed High School or More	107-6
Years in Education	107-7

Health and Safety

Life Expectancy	108-1
Rate of Practice of Physical Activity	108-2
Number of General Hospitals and the Numbers of Beds and Doctors per 1,000 Persons	108-3
The Number of Fire Protection Facilities	108-4
The Number of Public Security Facilities	108-5
Self-reported Health	108-6
Life Expectancy	108-7
Assault Rate	108-8

Personal Satisfaction and Work-leisure Balance

Work and Leisure Time Use (by Region)	109-1
Travel Commitment	109-2
Percentage of Employees Working Very Long Hours	109-3
Work and Leisure Time Use (by Year, Sex and Day)	109-4
Employees Working Very Long Hours	109-5
Life Satisfaction	109-6
Time Devoted to Leisure and Personal Care	109-7

Living Environment

Green Space and Urban Public Park Ratio	110-1
Water and Sewage Supply Percentage	110-2
Environmental Noise	110-3
Regional Distribution of Radon	110-4

Environmental Protection

Yellow Dust Observation Site and the Number of Observation Days	111-1
Ozone in Major Cities	111-2
Fine Dust in Major Cities	111-3
NO <sub>2</sub> in Major Cities	111-4
SO <sub>2</sub> in Major Cities	111-5
Annual Concentration of PM 2.5 in World Major Cities	111-6
Coastal Water Quality	111-7

Population and Human Settlement

Geographic Centers of Population in Years	112
---	-----

Population Distribution

1980	113-1
1990	113-2
2000	113-3
2010	113-4

Population Structure

Sex Ratio	114-1
Youth Dependency Ratio	114-2
Elderly Dependency Ratio	114-3
Aged-child Ratio	114-4
Total Fertility Rate	114-5
Elderly Population Rate	114-6
Change in Population Structure	114-7
Total Dependency Ratio	115-1
Dependency Rate of Population	115-2
Single-person Household Ratio	115-3
Change in Single-person Household Ratio	115-4
Mortality	115-5

Migration

Migration (1970)	116-1
Migration (1980)	116-2
Migration (1990)	116-3
Migration (2000)	116-4
Net Migration	116-5
Change of Urban-Rural Population Share	116-6
Number of People Returning to Farming	116-7
Seoul's Move in and Move out	117-1
Busan's Move in and Move out	117-2
Daegu's Move in and Move out	117-3
Incheon's Move in and Move out	117-4
Gwangju's Move in and Move out	117-5
Daejeon's Move in and Move out	117-6
Ulsan's Move in and Move out	117-7

Gyeonggi-do’s Move in and Move out .....	117-8
Gangwon-do’s Move in and Move out .....	117-9
Chungcheongbuk-do’s Move in and Move out .....	117-10
Chungcheongnam-do’s Move in and Move out .....	117-11
Jeollabuk-do’s Move in and Move out .....	117-12
Jeollanam-do’s Move in and Move out .....	117-13
Gyeongsangbuk-do’s Move in and Move out .....	117-14
Gyeongsangnam-do’s Move in and Move out .....	117-15
Jeju Special Self-Governing Province’s Move in and Move out .....	117-16

## KOREA IN THE WORLD

### Diplomacy

#### Diplomatic Relations and Treaties

Treaties, Major Treaties .....	118~119
Number of the Signed Treaties .....	118

#### Overseas Koreans and Diplomatic Missions Overseas

The World Distribution of Overseas and Diplomatic Missions Overseas .....	120~121
Korean Emigrants by Destinations .....	120-1
Korean Emigrants by Goals .....	120-2
North Korean Diplomatic Relations and Missions Overseas .....	121

#### Departure and Entry

Long Term Staying Foreigners and No-visa Agreement Nations .....	122~123
Korean Departure and Foreigner Entry .....	123-1
Foreigners Entry .....	123-2

#### Free Trade Agreement and Regional Collaboration System

Free Trade Agreement .....	124~125
Korea’s Participation in Regional Collaboration System .....	124~125
Stage of Economic Integration .....	125

#### International Organization

UN and UN-affiliated Organization Participation .....	126-1
Korea’s Participation to International Organization .....	126-2
Inter-governmental Organization Participation .....	126-3
Headquarters and Branch Offices of International Organization in Korea .....	127

#### Korean Activities in International Organization

United Nations Assessments and Korean Personnels in Major International Organization .....	128~129
Korea’s UN Assessments .....	128-1
Korean Forces for UN PKO .....	128-2
Major International Organizations with Korea Personnel .....	129-1
UN PKO Forces by Origin of Country .....	129-2
Korean UN PKO Forces .....	129-3

#### International Exchange

Personnel and Cultural Exchange .....	130~131
International Exchange Programs Budget by Korea Foundation .....	131-1
Intellectual Exchange .....	131-2
Cultural and Art Exchange .....	131-3

### International Development and Cooperation

#### Official Development Assistance

Official Development Assistance of Korea .....	132~133
ODA by Type .....	132~133

### Grants by Regions

Korea’s ODA Projects in Mongolia .....	134-1
Korea’s Grants in Asia, Middle East, CIS and Eastern Europe .....	134~135
Korea’s Grants by Regions .....	134-2
Korea’s ODA Projects in Vietnam .....	135-1
Korea’s Grants in Middle East .....	135-2
Korea’s Grants in South Asia, Eastern Europe and CIS .....	135-3
Korea’s Grants in East Asia and Southeast Asia .....	135-4
Korea’s Grants in Latin America .....	136-1
Korea’s Grants in Latin America (2005~2012) .....	136-2
Korea’s Grants in Africa .....	137-1
Korea’s Grants in Africa (2005~2012) .....	137-2

### International Trade and Investment

#### Exports and Imports

Exports and Imports of Korea .....	138~139
Trends in Proportion of Main Export Commodities .....	138-1
Trends in Proportion of Main Import Commodities .....	138-2
Leading Countries in World Trade .....	139-1
Trends in Exports·imports and Trade Balance and Degree of Dependence on Foreign Trade of Korea .....	139-2
Trends in Exports·imports and Trade Balance of China .....	139-3
Trends in Exports·imports and Trade Balance of United State of America .....	139-4
Trends in Exports·imports and Trade Balance of Japan .....	139-5

#### Foreign Direct Investment

Korean Outward Foreign Direct Investment .....	140~141
Korean Outward FDI of Electronic Components, Computer, Radio, Television and Communication Equipment and Apparatuses .....	140-1
Trends in Korea Outward FDI of Electronic Components, Computer, Radio, Television and Communication Equipment and Apparatuses .....	140-2
Korean Outward FDI by Industry .....	141-1
Trends in Korean Outward FDI .....	141-2
Korean Outward FDI of Motor Vehicles, Trailers and Semitrailers .....	141-3
Trends in Korean Outward FDI of Motor Vehicles, Trailers and Semitrailers .....	141-4

#### Inward Foreign Direct Investment in Korea

Korean Inward Foreign Direct Investment by Industry (1990) ...	142-1
Trends in Korean Inward Foreign Direct Investment .....	142-2
Korean Inward Foreign Direct Investment by Industry (2013) ...	142-3
Distribution of Inward Foreign Direct Investment Firms in Korea .....	143-1
Distribution of Wholesale and Retail Trade Inward Foreign Direct Investment Firms in Korea .....	143-2
Distribution of Business Service Inward Foreign Direct Investment Firms in Korea .....	143-3
Distribution of Electric and Electronic Inward Foreign Direct Investment Firms in Korea .....	143-4
Inward Foreign Direct Investment by Region .....	143-5
Inward Foreign Direct Investment by Sector .....	143-6

#### Overseas Resource Development

Korean Overseas Resource Development .....	144~145
Trends in Korean Extraction of Crude Petroleum and Natural Gas ORD .....	145-1
Trends in Korean Mining of Metal Ores ORD .....	145-2
Trends in Korean Mining of Coal and Lignite ORD .....	145-3

Trends in Korean Overseas Resource Development .....	145-4
Trends in Korean Self-sufficiency Rate of Major Mineral Resources .....	145-5

### Research and Expedition

Antarctic Voyage of Araon .....	146-1
Arctic Voyage of Araon .....	146-2
Dasan Arctic Research Station .....	146-3
Detailed Map of Dasan Arctic Research Station .....	146-4
King Sejong Antarctic Research Station .....	147-1
Antarctic Research Stations .....	147-2
Jang Bogo Antarctic Research Station .....	147-3

### The World Heritage

The World Heritage in Gyeonggi-do .....	148-1
Korean Heritage Items and Registration .....	148-2
The Sites of the World Heritage .....	149
The Sites of Intangible Cultural Heritage of Humanity and Memory of the World Heritage in Korea .....	150~151

### Living with Diversity

#### Foreign Residences

Distribution of Foreign Residences .....	153-1
Foreign Residences by Si·Do .....	153-2
Foreign Residences by Major Nationalities .....	153-3

#### Multi-cultural Families

Nationalities on Marriage Immigrants .....	154~155
Distribution of Marriage Immigrants, Naturalized Korean Citizens and Others (2006) .....	154
Multi-cultural Family Support Centers .....	155-1
Distribution of Marriage Immigrants, Naturalized Korean Citizens and Others (2013) .....	155-2
Trends in Marriage Immigrants, Naturalized Korean Citizens and Others .....	155-3
Regional Distribution of Marriage Immigrants, Naturalized Korean Citizens and Others .....	155-4

#### Marriage and Divorce with Foreign Spouses

Distribution of Marriage with Foreign Male Spouses and Nationalities .....	156-1
Distribution of Marriage with Foreign Female Spouses and Nationalities .....	156-2
Trends in Marriage and Divorce with Foreigner .....	156-3

#### Children of Multi-cultural Family

Distribution Children of Multi-cultural Family .....	157-1
Trends in Children of Multi-cultural Family by Nationality .....	157-2
Regional Distribution Children of Multi-cultural Family .....	157-3
Trends in Children of Multi-cultural Family by Age .....	157-4

#### The Korean Wave

Korean Wave in the World .....	158~159
Characteristics of the Korean Wave by Period .....	158-1
Export of Korean Wave .....	158-2

## MAP OF KOREA

Northern Region .....	160~161
Central Region .....	162~163
Southern Region .....	164~165
Index .....	166~169









Korea is located in the eastern part of the Eurasian continent on the west coast of the Pacific Ocean. People have populated the Korean Peninsula and the surrounding islands for many thousands of years during which time the national identity has evolved through many transformations beginning with the creation and merging of multiple kingdoms

and culminating more recently with Korea's spectacular emergence as a major player on the world stage. Korea's location at this critical juncture where the continent meets the ocean has allowed Korea to become a literal gateway to eastern Asia, but more than that it has fostered Korea's rich and distinctive culture. Throughout history the relationship between Korea and its neighbors has been deeply reciprocal, and it is these cultural diffusions that have helped to shape the uniqueness of Korean culture today.

Throughout the modern era, Korea suffered a series of hardships not the least of which included the tragedy of a domestic war and the division of the nation in the midst of a rapidly changing international political landscape. Today, the Republic of Korea has overcome these multiple challenges to achieve both sustained economic growth and democratization. By the end of the Japanese colonial era and the Korean War, Korea was one of the poorest nations in the world. Its per capita income stood at 67 USD, and yet in little more than six decades the country completely transformed itself into an economic powerhouse. Korea currently ranks 15th in the world economy and 8th in trade volume. Politically, the nation adopted a legal system that paved the way for democratic elections and party politics. There is a system of local governmental autonomy that has ushered in an era of the decentralization of power. The entire political system has made such significant progress over the last six decades and it has been able to help put in place policies and procedures that have improved the quality of life for the Korean people. Whereas in 1960 the average life expectancy for a Korean citizen was 52.4 years that number increased dramatically to 81.4 years by 2012. The nation has also made efforts to build a welfare state by initiating national health insurance and a number of social welfare systems. The driving force behind this achievement is an emphasis on education and an investment in people to parallel the creation of an effective industrial policy. The illiteracy rate is near zero, and almost 70% of the population pursues higher education.

The accomplishments that resulted from a stable political system, improved economy, and a free society have led Korea to become a powerful nation. Today, the Republic of Korea, as a responsible member of many international organizations, contributes to promoting world peace and international cooperation. The Republic of Korea is a non-permanent member of the United Nations Security Council and also plays a responsible role in various international organizations. Since the 1970s, Korea has carried out various cooperative projects with numerous international organizations and has worked in conjunction with numerous private organizations. Korea has also sponsored projects that focus on community development, education, medical, and refugee relief efforts around the world.

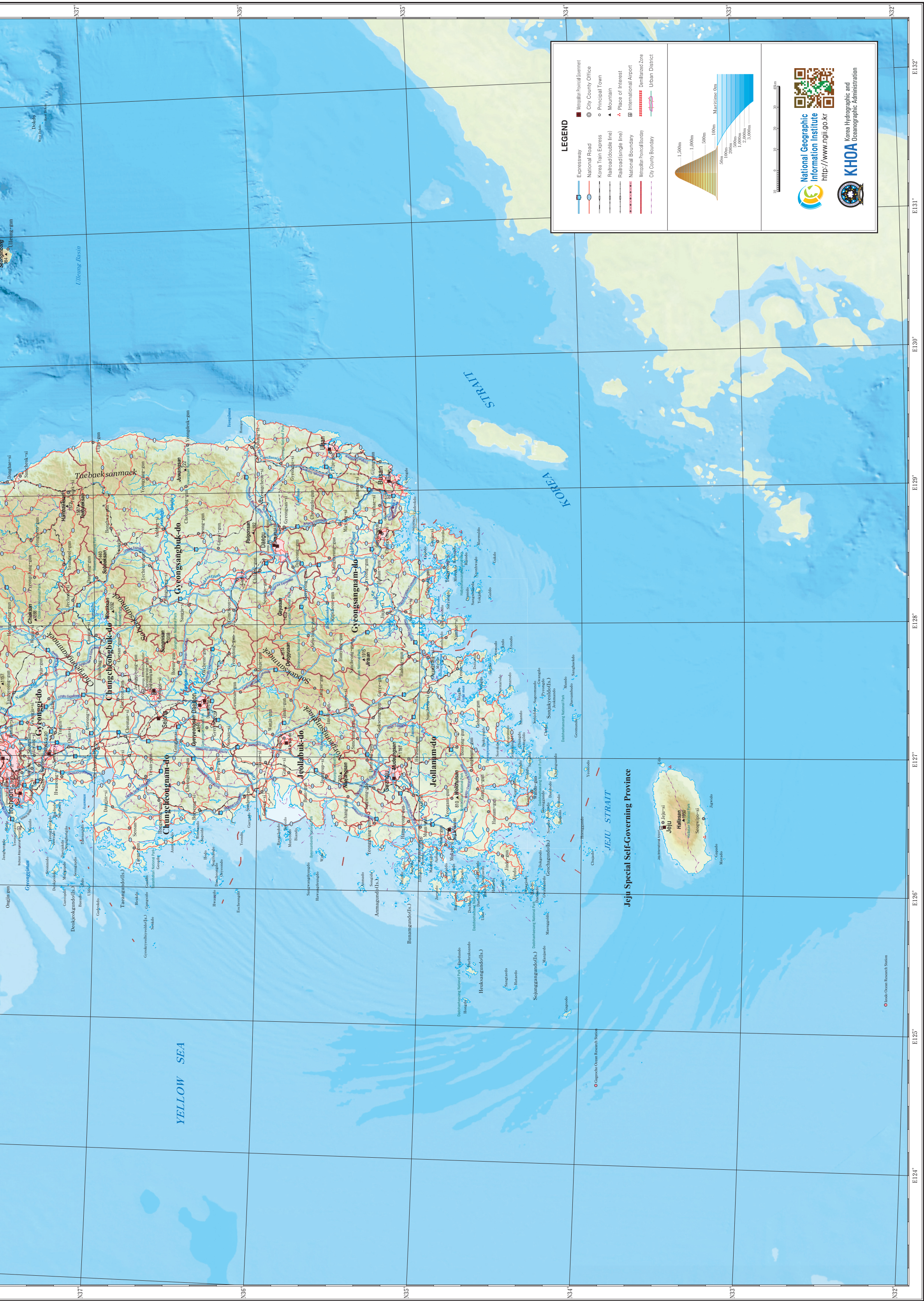
Seoul, the capital of Korea, has a long history. It served as the seat of many dynasties from ancient times forward, and now it has become one of the largest cities in East Asia. *Taegeukgi*, the Korean national flag, represents core tenets of Asian philosophy—harmony and change as well as the love of peace, which is a key aspect of the Korean national identity. The national flower of Korea is *Mugunghwa*, a Rose of Sharon, which symbolizes the eternity of the Korean people. The official language of Korea is Korean. *Hangeul*, the Korean alphabet used for the writing system, is considered to be one of the most scientific and unique systems of making letters in the world.





Map of Korea





**LEGEND**

Expressway	Metropolitan Government
National Road	City County Office
Korea Train Express	Principal Town
Railroad (double line)	Mountain
Railroad (single line)	Place of Interest
National Boundary	International Airport
Metropolitan Boundary	Demilitarized Zone
City County Boundary	Urban District

1,500m  
1,000m  
500m  
100m  
50m  
Maritime 0m

0 10 20 30 40 km  
0 10 20 30 miles

**National Geographic Information Institute**  
<http://www.ngii.go.kr>

**KHOA** Korea Hydrographic and Oceanographic Administration